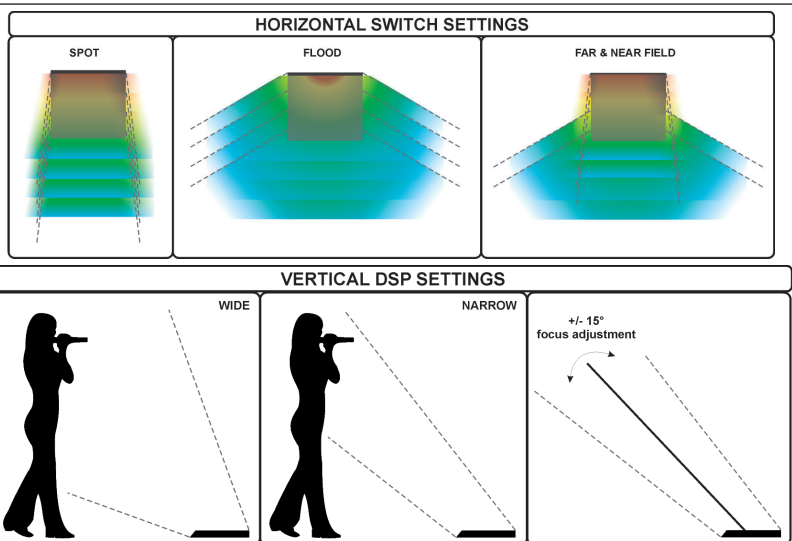
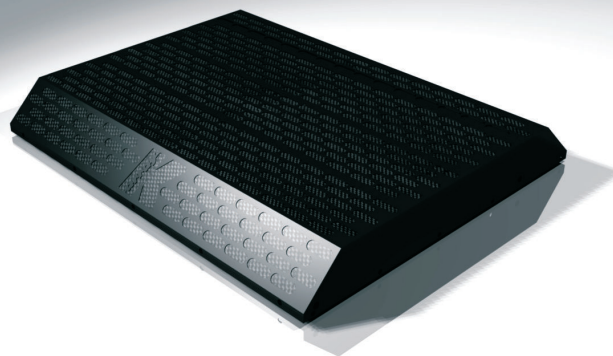
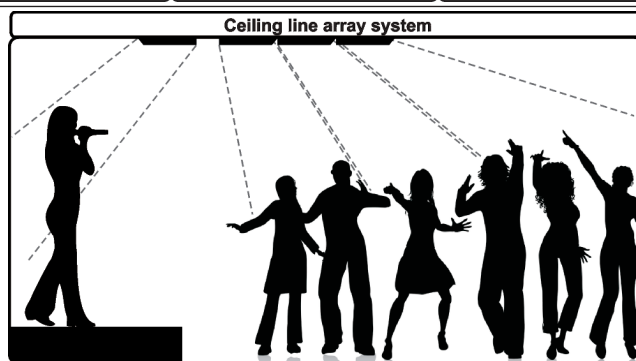


array
K**KJ50vb**

Variable beam, ultra-slim, high power speaker

**Features:**

- K** Variable independent horizontal coverage
- K** Variable dsp selectable vertical coverage
- K** +/- 15° focus area
- K** Multiple 2" long excursion full-range drivers
- K** Smooth frequency response
- K** Electronically protected
- K** High dynamic range capability
- K** Top quality components for outstanding performances
- K** Over thin frame for invisible installations
- K** Available in white

Technical Details

Acoustics	
Power handling	4 x 150 W ¹
Max power	4 x 200 W ²
Impedance	4 x 16 Ω
Operating frequency range	150 Hz - 19 KHz +/- 3dB (preset relating) ³
Frequency range	180 Hz - 20 KHz +/- 3dB (preset relating) ⁴
SPL 1W/1mt	98 dB ⁵
Maximum SPL	124 dB continuous - 130 dB peak ⁶
Coverage	
Horizontal	10° to 100° selectable independently for near, mid-near, mid-far, far-field
Vertical	10° to 70° coverage and 30° to 60° focus area DSP selectable
Transducers	
Full-range	32 x 2" neodymium magnet 0.75" VC long-excursion speakers
High frequency	4 x 1" neodymium magnet 1" VC dome tweeter
Power Audio Input	
Connector	1 x 8 poles Speakon
Selection Switches	
Horizontal coverage	4 x switches for near, mid-near, mid-far and far-field
Recommended Amplifiers	
Single ended mode	KA7-7 to drive till 4 units of KJ50vb (parallel)
Physical	
Measures	503 x 420 x 58 mm
Weight	10 Kg

Applications:

- K** TV stage monitoring
- K** Live stage monitoring
- K** Ceiling PA or monitor installations

Notes for data

1. Power handling is measured following AES standard conditions: transducers driven continuously for two hours with a band-limited noise signal having 6 dB of crest factor.
2. Max power is the maximum RMS applicable power for a musical signal, the referent signal is the one proposed by EIAJ standard.
3. Recommended maximum operating frequency range. Response depends on loading conditions and room acoustics.
4. Free field measured with 1/3 octave frequency resolution at 2 mt.
5. Measured@4 mt then scaled@1 mt.
6. Measured with audio source @1 mt.
7. This is the frequency in which the transducers produce the same sound pressure level (measured@2 mt).
8. Amplifier wattage rating is based on the maximum unclipped burst sine wave RMS voltage that the amplifier will produce into the nominal load impedance.

New materials and design are introduced into existing products without previous notice.
Present systems may differ in some respects from those presented in this brochure.

HP Sound Equipment s.r.l. www.k-array.com

Viale Roma 7/i 50037 San Piero a Sieve (Firenze) Italy - tel +39 055 8487222 fax +39 055 8487238 e-mail: info@k-array.com